



# GAT MONTHLY MEMBERSHIP PROGRESS REPORT

Results as of: 5/31/2023

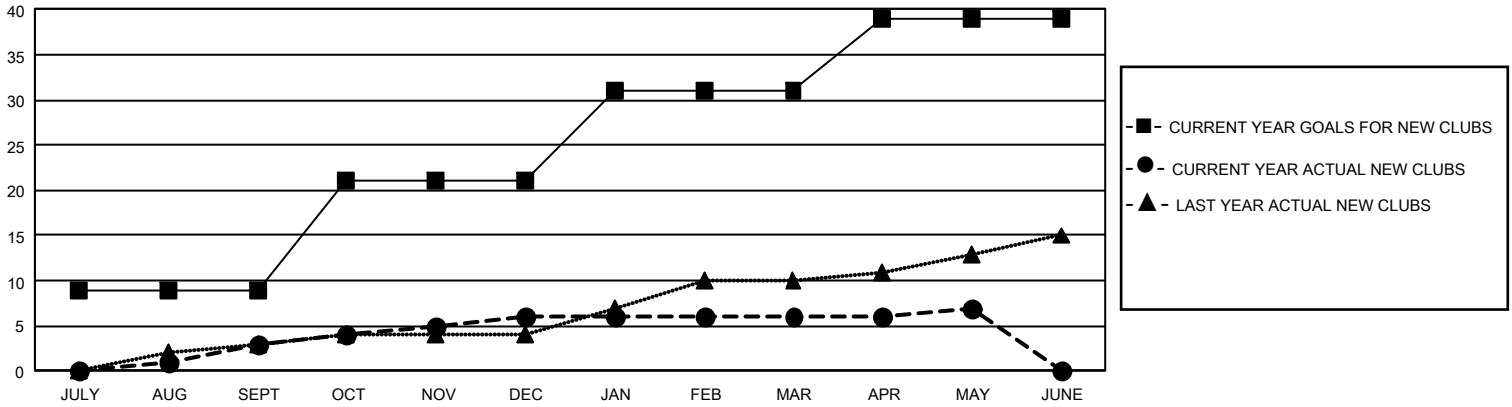
## GMT Constitutional Area 1, Group M

REPORT DOES NOT INCLUDE CLUBS IN UNDISTRICTED AREAS.

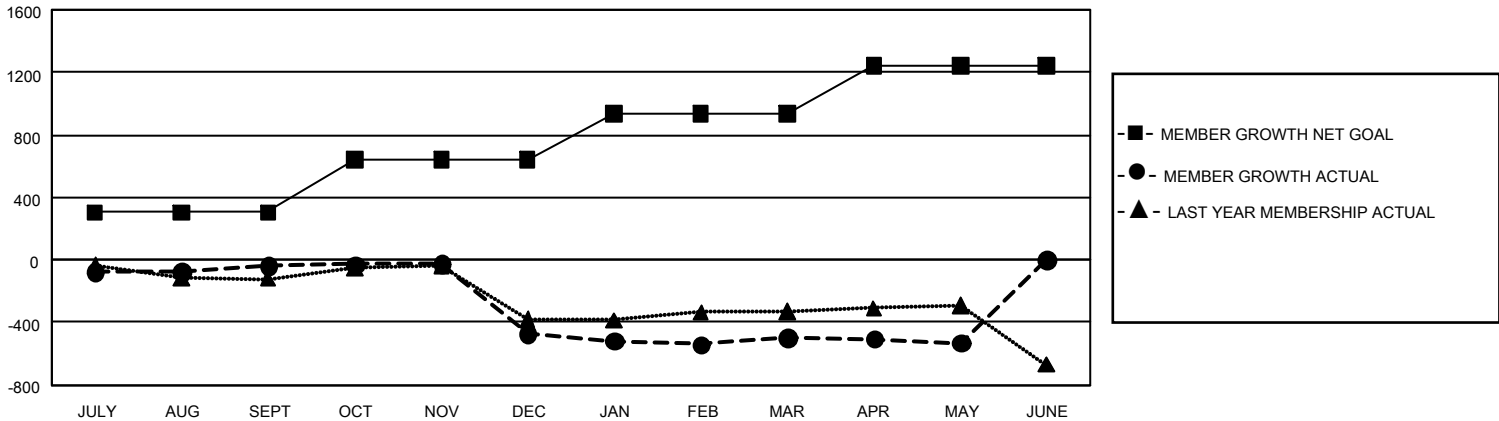
Clubs			
RESULTS FOR 2022-2023			
QUARTER	NEW CLUB GOAL	NEW CLUBS	DROPPED CLUBS
JULY/AUG/SEPT	27	3	7
OCT/NOV/DEC	36	3	18
JAN/FEB/MAR	30	0	7
APR/MAY/JUNE	24	1	1

Members			
RESULTS FOR 2022-2023			
QUARTER	MEMBER GROWTH NET GOAL	MEMBER GROWTH ACTUAL	DROPPED MEMBERS ACTUAL (including transfers)
JULY/AUG/SEPT	306	618	561
OCT/NOV/DEC	335	550	939
JAN/FEB/MAR	292	670	611
APR/MAY/JUNE	307	390	388

GOALS AND ACTUAL NEW CLUBS CUMULATIVE



GOALS AND ACTUAL MEMBERS CUMULATIVE



<b>DROPPED CLUBS: 33</b>	435 CLUBS OF 793 ADDED 1 OR MORE NEW MEMBERS	<b>GENDER DISTRIBUTION</b>	
		MALE 10,102 (60.43%) FEMALE 6,610 (39.54%) NON BINARY 1 (0.01%) PREFER NOT TO ANSWER 4 (0.02%)	
<b>DROPPED MEMBERS</b>		<a href="#">CLICK HERE FOR CUMULATIVE MEMBERSHIP DATA</a>	
DECEASED 313 CLUB CANCELLED 257 OTHER 1,931 <b>TOTAL 2,501</b>	TOTAL FAMILY UNIT MEMBERS 3,589 FAMILY MEMBERS PAYING HALF DUES 1,840		